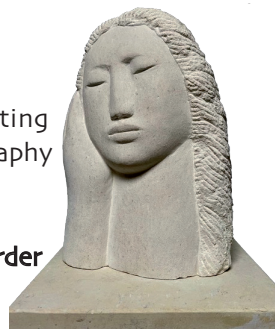


## Open Studios



- 1 **Joe Dias:** landscape paintings
- 2 **Alison Critchlow:** abstract landscape paintings
- 3 **Rowena Beaty:** sculpture with **Emma Puntis:** paintings and **Jack Vickridge:** wall based sculpture
- 4 **Karen Quaintmere:** paintings (open 27th only)
- 5 **Roger Golding:** paintings/prints
- 6 **Jan Goodey:** ceramics
- 7 **Bowness Primary School:** students' art and writing
- 8 **The Rogers Family and friend:** paintings/photography with **Ric Lynn:** ceramics
- 9 **Hilary Burt and Friends:** paintings/sculpture and mixed media, with **Kate Farimond** and **Maggie Corder**
- 10 **Ray Pearson:** pottery
- 11 **Jonathan Leech:** artistic woodturning



**LEAFLETS** available from: The Kings Arms,  
Pear Tree Tea Room and the Chapel, Port Carlisle

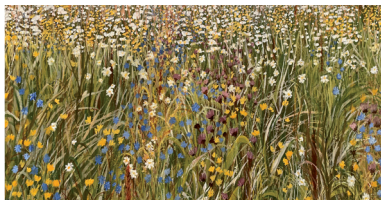


## Fringe Events in Bowness-on-Solway

### Saturday 20 September

**Poetry** with Susan Allen at  
Pear Tree Farm Tea Room from  
12 – 3 p.m.

**Poetry Readings** at  
The King's Arms from 5.30 p.m.



**Children's exhibition** at  
Bowness-on-Solway Primary School 11am – 4pm (both weekends)  
celebrating creativity, community and 150 years of learning, and imagination.

**FREE PARKING** on school grounds for all visitors over both weekends, until  
4pm when the gates will be locked.

### Saturday 27 September

**The Port Singers** and  
**Allerdale Fiddlers** at  
St. Michael's Church from  
5.30 – 6.30 p.m.

With very special thanks  
to Naomi Dodd and warm  
memories of Terry Croucher.  
Thanks too to all the singers  
and musicians.

**Open-Mic Music Night** at  
The King's Arms from  
6.30 p.m

**All events are free - everyone welcome**